

MILLIONS of
PEOPLE across
the **WORLD**
rely on **SIME**



Murelle One HE



Murelle Pro HE



Murelle Advanced HE



Murelle Elite HE



For **over 40 years** we've been building some of the **most intelligent and reliable** domestic boilers on the market.

About SIME

Sime has been successfully delivering intelligent and environmentally-efficient heating and hot water solutions for over forty years. Our heating and hot water products are in over three million homes worldwide. With a proven reputation for quality, reliability and performance, our domestic and commercial boilers incorporate the stylish design and innovative engineering, synonymous with our Italian heritage.

Manufactured using the most advanced production systems and the highest quality brass and stainless steel components, our boilers are compact, lightweight, easy to install and come with 2, 5 and 10 year warranties. Environmentally conscious, we strive to reduce, reuse and recycle wherever possible, and aim to continually improve our environmental performance with not only our production processes, but also with our product design and packaging.

EASE of INSTALLATION



Pre-installation

- Stylish design and innovative engineering, synonymous with Italian heritage
- Manufactured using the highest quality brass and stainless steel components
- All boilers come with the industry-leading Giannoni heat exchanger as standard
- Every boiler is individually tested
- Industry-leading training provided via Sime mobile training units and Sime's national network of training centres
- Robust and recyclable packaging



Installation

- Outputs up to 40 kW
- Lightweight
- Compact size makes installation easy
- Fixing template provided
- Tool removable hanging bracket
- 360-degree valve connections
- Adaptive gas valve for improved reliability
- Domestic hot water pre-heat
- Service interval timer
- Brass hydraulic block with DIN connections
- High-efficiency ErP compliant



Post-installation

- Up to 10 years manufacturer's warranty
- UK-based customer contact centre
- Engineer-led technical helpline
- Fault code diagnostics
- National network of service engineers

Box to wall in **10** minutes

Murelle Elite HE

30/35 kW

The Elite has been the stalwart boiler of the Murelle product suite for the last decade. Recently upgraded, the Murelle Elite now has enhanced efficiency and performance. Both Elite combination and System T models have the capability to control solar thermal as well as both high and low heating circuits simultaneously.

- **10 year warranty*** as standard
- **Fast, controlled hot water delivery**
- **Multi-zone control**
- **Ultra-quiet operation**
- **High modulation**
- **Range includes combination and system heating and hot water solutions**



Robust and reliable, the Elite HE is in a league of its own



**10 YEARS
PARTS &
LABOUR
WARRANTY***

*Terms & Conditions apply.

Murelle One HE

25 kW

**2 YEARS
PARTS &
LABOUR
WARRANTY***



**2 YEARS
PARTS &
LABOUR
WARRANTY***

The Murelle One and Pro HE boilers are the most lightweight and compact boilers in the Sime range. Their compact size makes them the ideal boiler for smaller houses and apartments, both models are slim enough to be housed within a cupboard but are so stylish that you probably won't want to!

- **2 year warranty* with option to extend up to 5 years**
- **Compact and lightweight**
- **Fast, controlled hot water delivery**
- **Service interval timer as standard**
- **LCD temperature and diagnostic display**
- **User adjustable thermostatic control 20 °C to 80 °C**
- **Efficient heating control connectivity (Open Therm connection)**
- **Weather compensation sensor connection**

The Murelle Pro HE range also includes:

- **Combination, system and heat only models**
- **Active combustion control**

Murelle Pro HE

20/25/30 kW

Murelle Advanced HE

30/40 kW

One of the most intelligent and versatile high-efficiency boilers available, the Murelle Advanced is available in both 30 kW and 40 kW outputs.

- **5 year warranty* with option to extend up to 10 years**
- **Active combustion control**
- **Natural gas/LPG adaptive (no conversion kit required)**
- **Compact dimensions**
- **Lightweight**
- **Fast, controlled hot water delivery**
- **Service interval timer as standard**

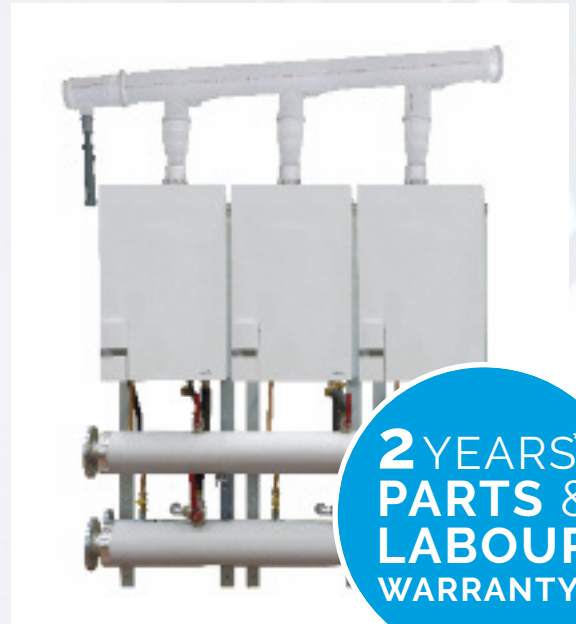
**5 YEARS
PARTS &
LABOUR
WARRANTY***



*Terms & Conditions apply.

Efficient boilers *for* efficient buildings

Sime light commercial products offer high performance heating and hot water solutions for any requirement. Whatever the building type, we have a product to suit its needs. Have access issues? No problem. Our commercial products are also available in kit form, enabling on-site assembly, for easy installation in areas with limited accessibility. All Sime commercial boilers are featured on the Carbon Trust's Energy Technology List. Part of the Carbon Trust's energy-efficient commercial buildings initiative, all products on this list are tax deductible in accordance with the Enhanced Capital Allowance scheme.



Murelle Equipe

Single 35/50/70/110 kW

Cascade Combination from 70 to 880 kW

Sime uses the finest quality brass and stainless steel components for increased performance and reliability

All Sime commercial products are listed on the Carbon Trust's Energy Technology List



All Murelle Equipe modular systems are equipped with 35, 50, 70 or 110 kW condenser coil exchangers, characterised by high yield. The combustion of methane generates water vapour, which in traditional boilers is conveyed to the outside through the release of heat from the chimney. The technology used in Murelle Equipe modular systems allows for the recovery of this heat with the main exchanger constructed of stainless steel, suitable for resisting the corrosive action of the condensate.

- **Modular systems from 70 kW to 880 kW**
- **No expensive external modular controls required**
- **2 year manufacturer's warranty* as standard**
- **Modulation of 1:22**
- **Sermeta stainless steel heat exchanger (single for the 35, 50 and 70 kW models and overlapping double for 110 kW models)**
- **Pollutant-reducing stainless steel radial pre-mix burner produces a 'micro flame' at low temperature**
- **Designed and built-in conformance to EEC Directives 92/42, 89/336, 73/23 and 90/396**
- **Each seal is subjected to stringent laboratory testing to guarantee superior performance**

**Warranty can be extended.
*Terms & Conditions apply.

TECHNICAL *details*

PERFORMANCE

	Power Use	One	Pro				Advanced		Elite		
		25 Combi	25HO Heat Only System	20R System	30R System	30 Combi	30 Combi	40 Combi	35T System T	30 Combi	35 Combi
Gas											
Sedbuk 2005 Seasonal Efficiency	%	90.4	90.5	90.5	90.5	90.4	90.4	90.5	90.4	90.3	90.3
Sedbuk 2009 Seasonal Efficiency	%	89	89.2	89.2	89.1	89	89	89.2	88.6	88.5	88.5
NOx Class		5	5	5	5	5	5	5	5	5	5
CH Output - Max	kW	25.7	25.7	21.4	32.2	25.7	25.7	37.5	37.2	31.6	37.2
CH Output - Min	kW	4.7	3.2	3.9	5.9	4.7	4.7	6.9	7.9	5.9	7.9
DHW Output	kW	28				28	28	40		28.9	34.1
Gas Inlet Pressure	mbar	19	19	19	19	19	19	19	19	19	19
Maximum Gas Rate	m ³ /hr	2.53	2.53	2.52	3.7	3.7	2.92	4.23	3.68	3.12	3.68
Mechanical/Hydraulic											
DHW Flow Rate @ 35°	l/min	10				11.5	11.5	16.4		12.1	14
DHW Flow Rate Minimum Operation	l/min	2				2	2	2		2	2
DHW Minimum Operation Pressure	bar	0.5				0.5	0.5	0.5		0.5	0.5
DHW Maximum Pressure	bar	6				6	6	6		6	6
Minimum CH Operation Pressure	bar	0.7	0.2	0.7	0.7	0.7	0.7	0.7	0.7	0.7	0.7
Maximum CH Operation Pressure	bar	2.5	2.5	2.5	2.5	2.5	2.5	2.5	2.5	2.5	2.5
Safety Discharge Pressure	bar	3		3	3	3	3	3	3	3	3
Compartment Ventilation Required		No	No	No	No	No	No	No	No	No	No
Integral Expansion Vessel Size	litres	9		9	9	9	10	10	10	10	10
CH Inhibitor Required		Yes	Yes	Yes	Yes	Yes	Yes	Yes	Yes	Yes	Yes
Condensate Connection Size	mm	21.5	21.5	21.5	21.5	21.5	21.5	21.5	21.5	21.5	21.5
Electrical											
Electrical Supply	Volt/Hz	230/50	230/50	230/50	230/50	230/50	230/50	230/50	230/51	230/52	230/53
Permenant Supply Required		Yes	Yes	Yes	Yes	Yes	Yes	Yes	Yes	Yes	Yes
Power Cable Supplied	1m 3core	Yes	Yes	Yes	Yes	Yes	Yes	Yes	Yes	Yes	Yes
Power Consumption	Watts	70	35	65	78	85	85	100	95	90	95
External Fuse Rating	Amp	3	3	3	3	3	3	3	3	3	3
Internal Fuse Rating	Amp	1.6	1.6	1.6	1.6	1.6	1.6	1.6	1.6	1.6	1.6
Boiler IP Rating		X5D	X5D	X5D	X5D	X5D	X5D	X5D	X4D	X4D	X4D
Pump Overrun	DHW/CH	Yes	No	Yes	Yes	Yes	Yes	Yes	Yes	Yes	Yes
Inbuilt Frost Protection		Yes	Yes	Yes	Yes	Yes	Yes	Yes	Yes	Yes	Yes
Weights											
Installer Lift Weight	kg	29.5	20.6	27.5	29	28.5	28.5	32.5	43	41	43
Gross Packed Weight	kg	33.5	24.6	31.5	33	32.5	32.5	36.5	47	45	47



**Since
boilers are
lightweight
and easy to
install**

BOILER DIMENSIONS

	Width (a)	Height (b)	Depth (c)
One			
Combi	400 mm	700 mm	250 mm
Pro			
Heat Only	400 mm	600 mm	250 mm
Combi/System	400 mm	700 mm	250 mm
Advanced			
Combi 30	400 mm	700 mm	250 mm
Combi 40	400 mm	700 mm	300 mm
Elite			
Combi/System T	450 mm	700 mm	350 mm

SERVICE CLEARANCES

Side	Upper	Lower	Front
15 mm	200 mm	200 mm	5 mm*

*Maintenance clearance 500 mm

AS STANDARD

	One		Pro		Advanced		Elite	
	Combi	Heat Only	System	Combi	Combi 30	Combi 40	Combi	System T
Push Button Customer Control	✓	✓	✓	✓	✓	✓	✓	✓
Customer Control Knobs	✓	✓	✓	✓				
Status/Diagnostic LCD Display	✓	✓	✓	✓	✓	✓	✓	✓
User Adjustable DHW 20° - 60°	✓			✓	✓	✓	✓	
User Adjustable CH 20° - 80°	✓	✓	✓	✓	✓	✓	✓	✓
TA Connection 24V	✓			✓	✓	✓		
TA Connection 240V		✓	✓					
Open Therm Connection	✓	✓	✓	✓	✓	✓	✓	✓
External Sensor Connection	✓	✓	✓	✓	✓	✓	✓	✓
Service Timer Built-In	✓	✓	✓	✓	✓	✓		

FLUE LENGTHS

	One		Pro		Advanced		Elite	
	25	20	25	30	30	40	30	35
H 100/60 mm	6 m	6 m	6 m	5 m	5 m	4 m	5 m	4 m
V 100/60 mm	8 m	8 m	8 m	7 m	7 m	6 m	7 m	6 m
H 125/80 mm	12 m	12 m	12 m	10 m	10 m	10 m	10 m	8 m
V 125/80 mm	15 m	15 m	15 m	13 m	13 m	13 m	13 m	11 m
H/V 80 mm Twin	50 m*	50 m*	50 m*	50 m*	50 m*	50 m*	50 m*	50 m*

*Refer to manual, length is combined and restricted by pressure loss

FLUE PART NUMBERS

100/60

8098605	100 mm Telescopic Flue Kit With Plume Management
8096250	100 mm Horizontal Flue Kit
8096151	100 mm Extension 500 mm Long
8096150	100 mm Extension 1000 mm Long
8095850	100 mm 90° Bend
8095950	100 mm 45° Bend
8082102	100 mm Flue Support Bracket
8091212	Vertical Flue Kit With 100 mm Adaptor

125/80

8096253	125 mm Horizontal Flue Kit
8096170	125 mm Extension 500 mm Long
8096171	125 mm Extension 1000 mm Long
8095870	125 mm 90° Bend
8095970	125 mm 45° Bend
8082103	125 mm Flue Support Bracket
8091212A	Vertical Flue Kit With 125 mm Adaptor

SIME a GLOBAL BRAND

ITALY • UNITED KINGDOM • NORTH AMERICA • CHINA • SPAIN • GREECE



Sime has been successfully delivering intelligent and environmentally-efficient heating and hot water solutions for over forty years. Sime heating and hot water products are in over three million homes worldwide. With a proven reputation for quality, reliability and performance, our domestic and commercial boilers incorporate the stylish design and innovative engineering, synonymous with our Italian heritage.



Sime Limited

1a Blue Ridge Park, Thunderhead Ridge, Glasshoughton, Castleford, WF10 4UA

0345 901 1114 • enquiries@sime.co.uk

sime.co.uk

